

Anti-Beta-tubulin Antibody-HRP labled
Mouse monoclonal antibody to Beta-tubulin-HRP labled
Catalog # AP61572**Specification**

Anti-Beta-tubulin Antibody-HRP labled - Product Information

Application	WB, IHC
Primary Accession	P07437
Reactivity	Insect, Human, Mouse, Rat, Rabbit, Monkey, Chicken, SARS, Dog
Host	Mouse
Clonality	Monoclonal
Calculated MW	49671

Anti-Beta-tubulin Antibody-HRP labled - Additional Information**Gene ID** 203068**Other Names**

TUBB5; Tubulin beta chain; Tubulin beta-5 chain

Target/Specificity

Recognizes endogenous levels of Beta-tubulin protein.

Dilution

WB~~WB (1/20000 - 1/600000), IH (1/1000 - 1/2000)

IHC~~1:100~500

Format

Liquid in 0.42% Potassium phosphate, 0.87% Sodium chloride, pH 7.3, 30% glycerol, and 0.09% (W/V) sodium azide.

Storage

Store at -20 °C.Stable for 12 months from date of receipt

Anti-Beta-tubulin Antibody-HRP labled - Protein Information**Name** TUBB**Synonyms** TUBB5**Function**

Tubulin is the major constituent of microtubules, a cylinder consisting of laterally associated linear protofilaments composed of alpha- and beta-tubulin heterodimers. Microtubules grow by the addition of GTP-tubulin dimers to the microtubule end, where a stabilizing cap forms. Below the cap, tubulin dimers are in GDP-bound state, owing to GTPase activity of alpha-tubulin.

Cellular Location

Cytoplasm, cytoskeleton

Tissue Location

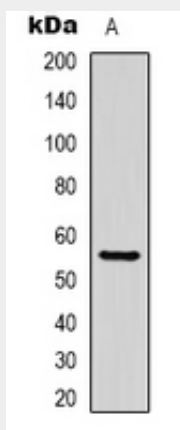
Ubiquitously expressed with highest levels in spleen, thymus and immature brain.

Anti-Beta-tubulin Antibody-HRP labeled - Protocols

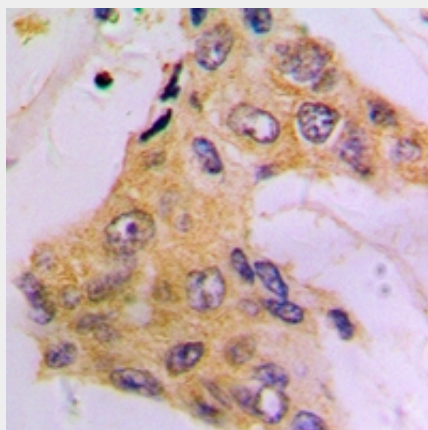
Provided below are standard protocols that you may find useful for product applications.

- [Western Blot](#)
- [Blocking Peptides](#)
- [Dot Blot](#)
- [Immunohistochemistry](#)
- [Immunofluorescence](#)
- [Immunoprecipitation](#)
- [Flow Cytometry](#)
- [Cell Culture](#)

Anti-Beta-tubulin Antibody-HRP labeled - Images



Western blot analysis of Beta-tubulin-HRP labeled expression in Hela (A) whole cell lysates.



Immunohistochemical analysis of Beta-tubulin-HRP labeled staining in human breast cancer formalin fixed paraffin embedded tissue section. The section was pre-treated using heat mediated antigen retrieval with sodium citrate buffer (pH 6.0). The section was then incubated with the antibody at room temperature and detected using an HRP conjugated compact polymer system.

DAB was used as the chromogen. The section was then counterstained with haematoxylin and mounted with DPX.

Anti-Beta-tubulin Antibody-HRP labled - Background

Recombinant protein corresponding to human Beta-tubulin.